

Off-leash Area (OLA)

Mayor Michael Grayum

September 30, 2015

Necessity

- Citizen Requests

Necessity

- Citizen Requests
- Parks Master Plan
 - Recommended facility in plan (p. 68)
 - Acknowledged that it may need to be smaller

Necessity

- Citizen Requests
- Parks Master Plan
 - Recommended facility in plan (p. 68)
 - Acknowledged that it may need to be smaller
- **Encourage owners to follow the leash and clean-up laws**

Siting Process

- We looked at:
 - Adding as amenity to existing park
 - PowderWorks
 - Sellers

Siting Process

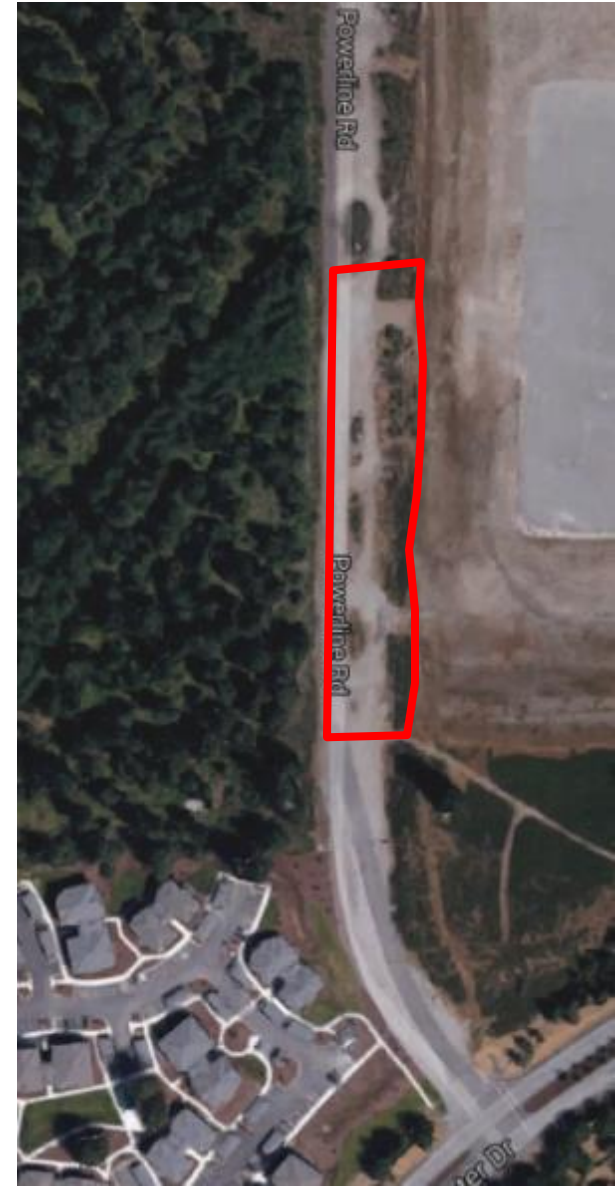
- We looked at:
 - Adding as amenity to existing park
 - PowderWorks
 - Sellers
 - Siting on non-park public property
 - Powerline Rd
 - Behind fire station

Possible Locations

- Powerline Road
- Behind the Fire Station
- Empty Lot Across from City Hall
- Tract I
- Sellers park
- Two Locations in PowderWorks Park

Powerline Road

- Pros
 - Away from housing
 - Centrally located
 - Large
- Cons
 - Narrow
 - Access
 - Powerline Rd is an easement through Creekside
 - Parking
 - Security



Behind Fire Station

- Pros
 - Away from housing
 - Secure
 - Parking
- Cons
 - Access
 - Small
 - Loss of training area
 - Cost (access walkway)



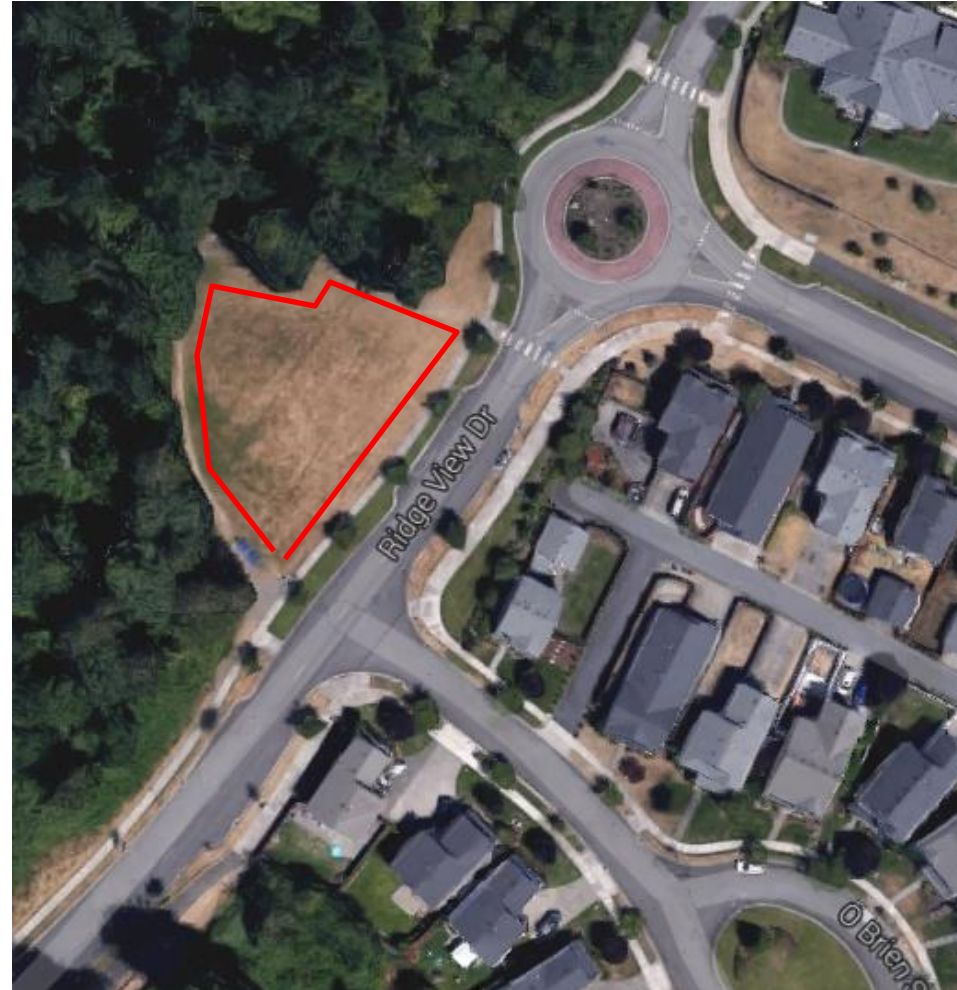
Empty Lot Across from City Hall

- Pros
 - Size permits almost any configuration
 - Parking
 - Security
 - Away from housing
- Cons
 - Temporary



Tract I

- Pros
 - Mostly separated from houses
 - Water supply likely easiest in group
- Cons
 - Too small
 - Shell midden site (no digging)
 - Lose use of park for anything else



Sellers Park

- Pros
 - Increases usage of park
 - Away from housing
- Cons
 - In DuPont Greenbelt
 - Cost
 - Parking
 - Dogs/people mixing during access



PowderWorks Park- Two Sites



PowderWorks Park Playground

- Pros
 - Access
 - Parking
 - Increase usage at park
 - Security
 - Can have large dog and small dog sections
- Cons
 - Dogs/people mixing during access
 - Distractions for dogs with playground so near



PowderWorks Park West Side

- Pros
 - Access/parking
 - Less mixing of dogs/people during access
 - Includes shade
 - Increases usage in park
 - Security
- Cons
 - Closer than others to houses
 - Smaller than other side



Suggested Location: PowderWorks Park West Side



Suggested Location: PowderWorks Park West Side



Funding

- One-time Construction Cost
 - \$14,000 - \$20,000 fence
 - Estimated \$600-\$1,200 in miscellaneous costs
 - Signage
 - Water?

Funding

- One-time Construction Cost
 - \$14,000 - \$20,000 fence
 - Estimated \$500 - \$800 in miscellaneous costs
 - Signage
 - Water?
- Ongoing Maintenance
 - Partnership with local group preferred
 - City mows, edges, waters
 - Group takes care of cleaning, upkeep
 - Crucial piece to establishing OLA

Community Discussion

- Future Improvements
 - Benches
 - Play equipment (items \$600-\$2,000 ea)
 - Water
- Donations are welcome!
- Can we keep it clean?
 - Organized group
 - Organized volunteers
 - Check 3-4 times per week
- Rules and Regulation



OFF LEASH DOG AREA RULES AND REGULATIONS

1. Aggressive dogs are not permitted.
2. Handlers assume all risks related to use of off-leash area and assume legal responsibility for any damage or injury caused by their dog(s).
3. Dogs must have current vaccinations and wear collar displaying current license.
4. Dogs shall not be left unattended.
5. Owners must carry a leash at all times.
6. Handlers are required to clean up waste and dispose of it in the receptacle.
7. Minimum age for puppies is four months old.
8. Children under the age of 8 are not permitted in the off-leash area.
9. All children will be under constant adult supervision.
10. Female dogs in heat are not permitted.
11. No food, treats, or glass containers in the off-leash area.
12. Off-leash area and DuPont Parks require permit for commercial use.

Enjoy the off-leash area!

Please respect the park and others enjoying its use.

Visit the City of DuPont at www.dupontwa.gov