

City of DuPont

DuPont, WA . . . A Rich History and a Vibrant Future.



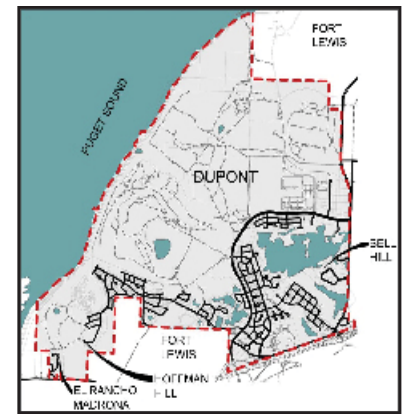
2008 Water Quality Report

Drinking Water Quality Annual Report

We are very pleased to present the 2008 Water Quality Report. Our constant goal is to provide you with a safe, dependable supply of drinking water. As part of our continued commitment to ensuring the quality of your water, we want to keep you informed about the excellent water and services we have delivered to you for the past year. We are proud that your drinking water meets or exceeds all Federal and State requirements.

Your City's Water System

The City of DuPont currently utilizes groundwater from five (5) wells for its public water supply. The City's water supply wells are located at Bell Hill, Hoffman Hill and El Rancho Madrona (see map). Bell Hill Wells No's. 1 and 3 draw water from the Red Salmon Springs Aquifer; Bell Hill Well No. 2 draws water from the deeper undifferentiated Outwash/Lakewood Glacier Aquifer. Bell Hill Wells 1 and 2 are equipped with an emergency generator for operation during power outages. Hoffman Hill Well No. 1 draws water from the Red Salmon Springs Aquifer. Additional booster pumps were placed in service 2003 to provide adequate pressure to the customers on Hoffman Hill. DuPont's fifth well is located in the El Rancho Madrona system and also draws water from the deep Red Salmon Springs aquifer. The El Rancho Madrona water system is operated as a satellite system and provides service only to El Rancho Madrona customers. All City wells access deep aquifers, making them less susceptible to contaminants.



The City has three storage reservoirs. A 3.0 million-gallon reservoir is located at Hoffman Hill, a 1.0 million-gallon reservoir at Bell Hill and a 38,000-gallon reservoir is at El Rancho Madrona. The only treatment used on DuPont's groundwater sources is the addition of small amounts of chlorine to provide disinfection.

Water Quality Protection Programs

The City of DuPont is committed to supplying its customers with high quality and aesthetically pleasing drinking water. The City has adopted the following practices to ensure that the drinking water supplied to its customers meets or exceeds all federal and state standards.

- 1995 Washington State Department of Health Water Source Assessment. Our water system sources have received a low susceptibility to potential sources of contamination. Additional information is on file at the Public Works Department.
- 2003 Washington State Department of Health Sanitary Survey. Overall operation and maintenance of the facilities is excellent. Improvements have been made to provide additional protection of the emergency wells and facilities. The full report is on file in the Public Works Department.
- 2003 Water System Comprehensive Plan. The City prepared a comprehensive analysis of all aspects of the water system identifying current and future plans to continue to provide high quality drinking water to its customers including a Water Conservation Program. This plan has been approved by the Washington State Department of Health. A copy of the plan is on file at the Public Works Department.
- 2003 Wellhead Protection Program. The City is in the process of implementing a program that sets protective boundaries around the City's wells. This program will identify potential contamination sources around the wells and provides for notification of these sites to City residents.
- Cross Connection Control Program. The City of DuPont is aggressively protecting our water supply from contamination. This effort is called the "Cross Connection Control Program." It ensures that used or contaminated water does not re-enter the water system. This program assures that customers take the proper precaution to prevent this from happening, by means of inspection and testing of backflow devices as well as assuring plumbing codes are properly followed. For DuPont water customers that are regulated by this program, we will contact you when backflow assembly tests and inspections are due. More detailed information is available by contacting DuPont Public Works.

Definition of a Cross Connection

A cross-connection is any temporary or permanent connection between a public water system or consumer's potable (i.e., drinking) water system and any source or system containing non potable water or other substances. An example is the piping between a public water system or consumer's potable water system and an auxiliary water system, cooling system, or irrigation system.

The City welcomes input from its residents on methods to protect and conserve its water supply and can provide additional information on ways you can help protect groundwater. Residents with input on water issues or this report may contact the DuPont Public Works Department at City Hall, 912-5381.

Water Quality Monitoring Requirements

The City of DuPont routinely monitors for contaminants in your drinking water as required by Federal and State laws. Some of the monitoring and sampling frequencies are shown below. The City is currently in compliance with all existing water quality monitoring requirements. The second table below shows the results of our monitoring for the period of January 1 to December 31, 2008. All drinking water, including bottled drinking water, may be reasonably expected to contain at least small amounts of some contaminants. It is important to remember that the presence of these contaminants does not necessarily pose a health risk. More information about contaminants and potential health effects can be obtained by calling the Environmental Protection Agency's Safe Drinking Water Hotline at 1-800-426-4791.

We're proud that your drinking water exceeds all Federal and State requirements. Through our monitoring and testing the EPA has determined that your water is SAFE.

Contaminant Type	Monitoring Requirements (1)
Bacteriological Contaminants	10 samples per month in the distribution system
Inorganic Chemicals	1 sample every three years at each well
Lead and Copper	10 samples each year at selected resident's taps
Volatile Organic Chemicals	1 sample every three years at each well
Synthetic Organic Chemicals	The City currently has a monitoring waiver for synthetic organic chemicals because its previous sample recorded no detections. The normal monitoring period required is 1 sample every 3 years at each well.
Radionuclides	1 sample every 4 years at each well.
Trihalomethans	1 sample from each of our 3 water treatment facilities, collected at the far end of the distribution system.

(1) Increased monitoring is required for any chemicals detected above an "Action Level" or a "MCL."

Water Quality Data

Contaminant	Highest Level Allowed (MCL)	Highest Level Detected	Ideal Goal (MCLG)	Possible Sources of Contamination
Primary Contaminants				
Turbidity	1.0 NTU	0.3 NTU	N/A	Soil Erosion, iron or manganese particulates
Nitrate	10.0 ppm	1.0 ppm	10.0 ppm	Runoff from fertilizer, leaching from septic systems, natural deposits.
Arsenic*	50.0 ppb	.002 ppm		Natural deposits
Secondary Contaminants				
Iron	0.3 ppm	0.22 ppm	N/A	Natural deposits
Manganese**	0.05 ppm	0.25 ppm	N/A	Natural deposits

* While our drinking water meets EPA's standard for arsenic, it does contain low levels of naturally occurring arsenic. EPA's standard balances the current understanding of arsenic's possible health effects against the costs of removing arsenic from drinking water. EPA continues to research the health effects of low levels of arsenic, which is a mineral known to cause cancer in humans at high concentrations and is linked to other health effects such as skin damage and circulatory problems.

** As manganese has regularly exceeded the secondary MCL in Bell Hill Well No. 2, the City remedies this problem by either not using the well, or by mixing the high manganese water with water from other wells to lower the concentration of manganese. Manganese is monitored for aesthetic reasons and has no ill health effects associated with it.

Reading the Table

Maximum contaminant level (MCL): The highest level of a contaminant that is allowed in drinking water. MCLs are set as close to the MCLGs as feasible using the best available treatment technology.

Secondary MCLs: MCLs based on factors other than health effects, such as taste and aesthetics.

Maximum contaminant level goal (MCLG): The level of a contaminant in drinking water below which there is no known or expected risk to health. MCLGs allow for a margin of safety.

Nephelometric turbidity unit (NTU): The unit of measure for turbidity.

Part per million (ppm): One part per million, or one milligram per liter (mg/L) corresponds to one penny in \$10,000, or one penny in one million pennies.

MCLs are set at very stringent levels. To understand the possible health effects described for many regulated contaminants, a person would generally have to drink 2 liters of water every day at the MCL level over their lifetime to have a one-in-a-million chance of having the described health effect.



General Health Effects Information

With groundwater-sourced drinking water, water travels through the ground dissolving naturally occurring minerals, and can pick up substances resulting from the presence of animals or human activity. To ensure that tap water is safe to drink, EPA prescribes regulations which limit the amount of certain contaminants in water provided by public water systems. Contaminants that may be present include microbes, inorganic and organic chemicals, pesticides and herbicides, and radioactive materials.

Some people may be more vulnerable to contaminants in drinking water than the general population. Immune-compromised persons such as persons with cancer undergoing chemotherapy, persons who have undergone organ transplants, persons with HIV/AIDS or other immune system disorders, some elderly, and infants can be particularly

at risk from infections. These people should seek advice about drinking water from their health care provider. EPA and Centers for Disease Control guidelines on appropriate means to lessen the risk of infection by Cryptosporidium and other microbial contaminants are available from the Safe Drinking Water Hotline (1-800-426-4791).

The City of DuPont's aquifer sources do not contain lead or copper. However, lead and copper can leach into residential water from building plumbing systems. Lead and copper monitoring is conducted at homes categorized as high risk. Compliance is determined on a regional basis. The City is in compliance with all State and Federal lead and copper monitoring requirements.

Thank you for allowing us to continue providing your household with clean, quality water. In order to maintain a safe and dependable water supply we are required to make periodic improvements that will benefit all of our customers. These improvements are sometimes reflected as rate structure adjustments. We thank you for your continued support and understanding.

We at the City of DuPont Public Works Department work around the clock to provide top quality water to every household. We ask that all our customers help us protect our water sources, through individual stewardship and conservation.

Please contact The City of DuPont Public Works Department at 912-5381 or visit our website at www.ci.dupont.wa.us, if you have additional questions.

We constantly monitor for various constituents in the water supply to meet all regulatory requirements.

◆ **Where can I find out more information about my drinking water?**

Additional questions or comments about the City's water supply, or other general drinking water issues, can be directed to the following contacts:

City of DuPont	1700 Civic Drive DuPont, WA 98327	(253) 912-5381
Environmental Protection Agency	Safe Drinking Water Act Hotline	(800) 426-4791
Washington State Department of Health	Suite 200, K17-12 20435 72nd Avenue South Kent, WA 98032	(253) 395-6750

◆ **How can I get more involved in decisions affecting my drinking water?**

The DuPont City Council regularly meets at 7:00 PM at the DuPont City Hall on the second and fourth Tuesday of each month.

◆ **Is bottled water cleaner and safer than tap water?**

Drinking water, including bottled water, may reasonably be expected to contain at least small amounts of some contaminants. The presence of contamination does not necessarily indicate that the water poses a health risk. More information about contaminants and potential health effects can be obtained by calling the Environment Protection Agency's Safe Drinking Water Hotline at 1-800-426-4791.

◆ **Who regulates bottled water?**

The Federal Food and Drug Administration regulates contaminants in bottled water and is responsible for providing the same levels of public health protection.

◆ **Why is chlorine added to my water?**

Pursuant to state and federal laws, very small amounts of chlorine are added to your water as a disinfecting agent to protect you from disease-causing microorganisms. If you are bothered by the chlorine taste, keep a pitcher of tap water in the refrigerator. The chlorine will dissipate rapidly if the water is allowed to sit for a time.

◆ **Is fluoride added to our drinking water?**

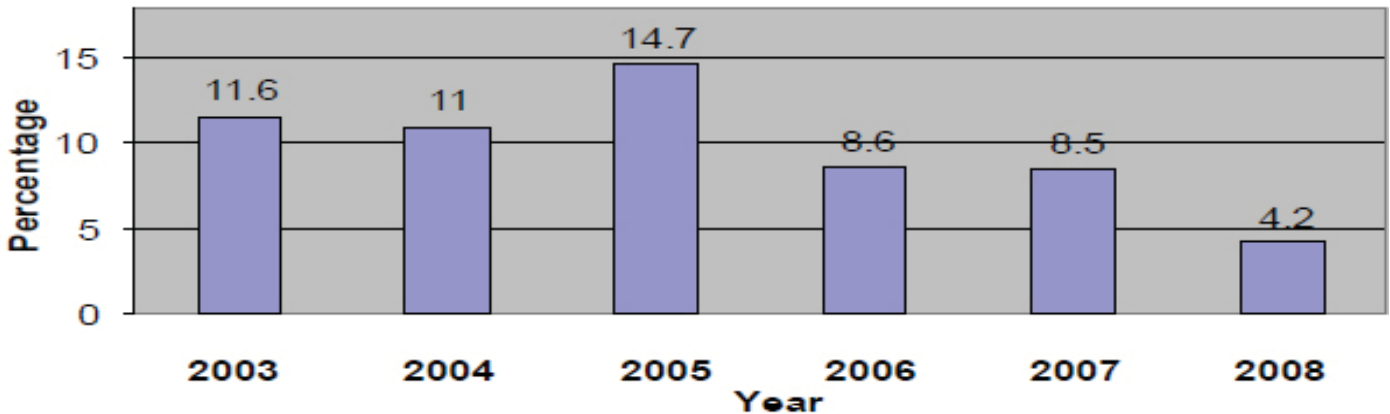
No, the City does not add fluoride to its drinking water supply.

Water Use Efficiency Performance Report

In 2003, the Washington State Legislature passed the Municipal Water Law to address the increasing demand on our state's water resources. The law established that all water suppliers must use water more efficiently to help them meet future demands. The State Department of Health has been directed to adopt an enforceable Water Use Efficiency (WUE) program intended to achieve a high level of stewardship among all water suppliers, contribute to long-term supply reliability and public health concerns, and ensure efficient operation and management of water systems. We are proud to report we have been implementing many of the new requirements and are meeting many of the goals. Below is a summary of the report. A full report will be available for you to download from the City's web site at www.ci.dupont.wa.us.

1. Water savings goals.
 - o Reduce unauthorized water use to below 10% of water production
 - o Leak detection & repair program
 - o Public education efforts
 - o Large area landscape management
2. Action steps for achieving goals.
 - o Unauthorized water use is aggressively sought out
 - o Repair leaks once detected
 - o Public education through newsletters, website, and pamphlets
 - o Landscape management through the use of a weather station and computer controlled irrigation timing has been in use for several years. As new parks come on line, they will be managed this way, also.

The table below shows percentage of unauthorized withdrawals or unaccounted for water. Achieving less than 10% unaccounted for water is our goal.



For information on water conservation go to <http://www.ci.dupont.wa.us/public-works/water/index.html> on the City website.

Postal Customer

ECRWSS

RRSRT STD
US POSTAGE
PAID
WA STATE DEPT
OF PRINTING
98501

City of Dupont
1700 Civic Drive
Dupont, WA 98327